

# Mono 12

Assembly and operating instructions

**visplay**

play it smart

Visplay products are manufactured according to the latest technology and comply with valid rules and regulations.

Nevertheless, these products can cause injury or damage if:

- the product is improperly installed
- the product is improperly used
- the product is improperly altered or modified
- original accessories are not used
- the safety regulations are not observed.

#### **⚠ WARNING**

**Each person involved in the planning, installation and/or use of our products must be carefully read and observe these instructions of use.**

The following are of course also valid:

- Relevant accident prevention regulations
- Generally recognized safety rules
- National regulations – please consult Visplay if there is a discrepancy with the Assembly manual

## Safety instructions

#### **⚠ WARNING**

**When playing, children often incorrectly assess danger. You must therefore make sure that your store fittings are not used as toys.**

Please pay attention to the following points:

- Structural conditions, in particular the design and bearing capacity of walls, ceilings and floors. If bearing capacity for the specified tractive or pressure load cannot be achieved by suitable fastening or stabilising elements, please refrain from installation.
- All the structural components supplied for stabilising structures are to be used in an unrestricted manner and must not be removed.
- The products may only be loaded after all the installation steps have been completed.
- Merchandise supports should be loaded as evenly as possible.
- Avoid loading in fits and starts.
- The maximum weight loads is to be observed. This can be found in the instructions on assembly and use, as well as in our sales documentation.
- Furniture with castors is generally much more unstable than furniture with glides. Tall, heavy structures on castors should thus be avoided.
- The recommendations of your safety officer should also be observed.

## General care for chrome, silk and pearl

In clothing retail applications, frequent dragging of clothes hangers along the surface can cause slight abrasion to their hooks. This effect is most pronounced - more so than with front-on horizontal or inclined-pole displays - where garments are hung side-on such that hangers have to be moved more frequently. To prevent garments from becoming soiled, cleaning of the hanging rods is essential.

This abrasion can be considerably reduced by using a

coat hanger cover (scliss, 929-449.02).

No responsibility can be accepted for damage caused by soiling, as the above mentioned abrasion depends on the material of the coathangers in use.

With powder-coated surfaces subject to frequent use, use of special paints is recommended. We will be happy to advise you.

## Use and care of merchandise supports with anodised aluminium surfaces

Visplay merchandise supports with anodised aluminium surfaces are hard-wearing. However, the exchange of accessories might cause slight marks on the surface. Accessories with plastic inserts usually cause less wear or none at all.

To remove the marks, we recommend using cleaning agents ranging from pH 5–8 (do not use any detergents with acidic or alkaline reaction). Clean by washing the surfaces using a sponge and water containing a wetting agent. Then remove any loose or greasy dirt. Rubbing off the surfaces with detergent using pure cotton waste or porous cleaning tissue and applying the necessary pressure in rubbing direction will remove the marks.

Aluminium profiles with widths exceeding 200 mm must be subjected to abrasive cleaning using detergents specifically developed for this purpose. The cleaning agents developed for abrasive cleaning contain very finely ground neutral polishing agents and have to be adapted to the oxide layer. Alternatively, cleaning can be carried out using an abrasive fibrous web (e.g. Scotch-Brite, type A, red, fine or very fine) in combination with a non-abrasive detergent.

Subsequently, residual cleaning agents should to be rinsed off using a sponge and clear water. Then rub off the part with a chamois.

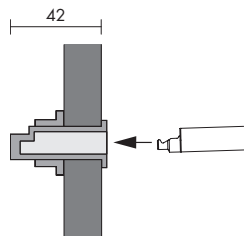
## Assembly dimensions / Layout

The choice and arrangement of the holder sets must be adapted to the respective assortment and expected load.

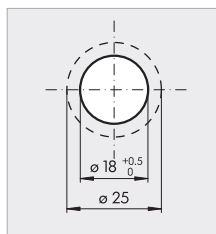
- Please observe the indications concerning weight loading and ensure that the substructure of the wall units/furniture and their fixtures can support the expected loads.
  - With free-standing furniture, ensure that there is sufficient stability even with the intended merchandise supports.
  - When installing in glass, safety glass must be used.

### Assembly dimensions Mono 12

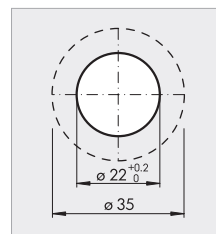
Wood: 10–20 mm  
Safety glass: min. 10 mm



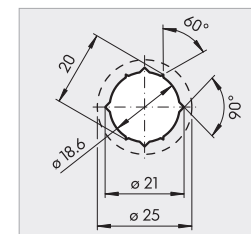
wood



glass

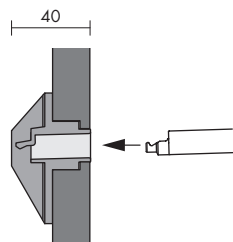


metal

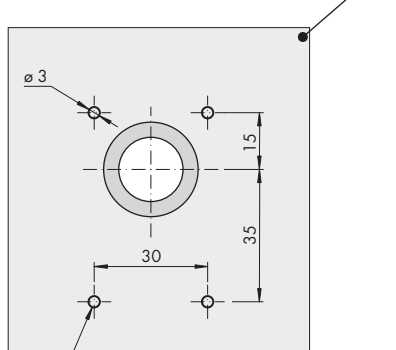


### Assembly dimensions Mono 12 light

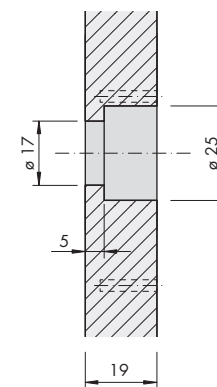
Wood: 19 mm



Rabbet size for wood

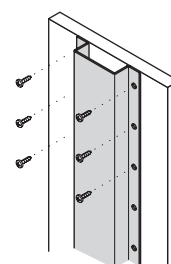


- Depth of drilling on the back 10 mm

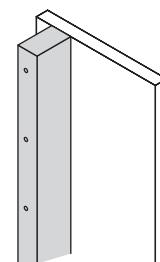


## Layout

Panels and sub-structures must be toughened against bowing. Wooden ledges or angle sections are suitable for this purpose.

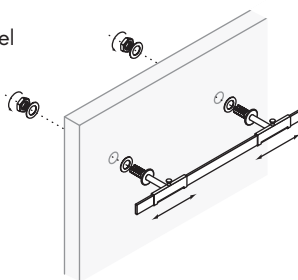
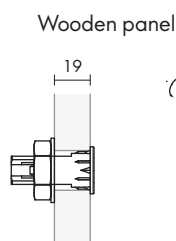


glued and screwed

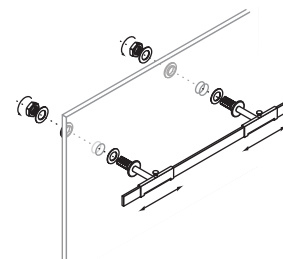
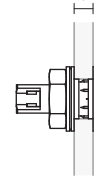


## Assembly instructions

Insert holder from the front and bolt together from behind.



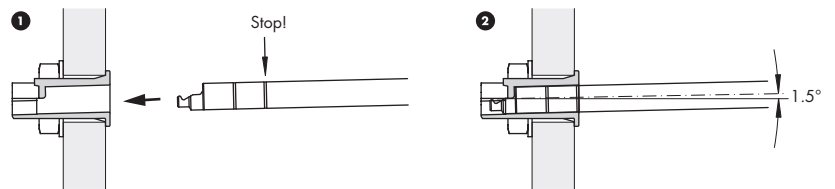
Glass panel  
min. 10



- When fitting Mono 12 in wood and glass, please use an assembly template for example.
  - When screwing into glass, a torque of max. 25 Nm is to be observed.

## Instructions of use

With Mono 12, the merchandise support is inserted horizontally into the socket until the catch point. Merchandise support slightly inclined (1.5°).



## Weight loading

- ❗ The indicated weight loads are always based on the total weights of the merchandise support and goods. Please observe that max. weight loading decreases as the merchandise support increases in length. Please observe that the inclination of the merchandise support changes with an increase in load. Different weights on the merchandise supports produce an uneven overall appearance of the goods display. Please note that the weight limit can reduce considerably when Mono 12 is used in glass and sheet metal. Please also observe the weight loads indicated in our sales documentation.

### Max. load

Holder Mono 12 (wood)	per holder	15 kg
Holder Mono 12 (glass)	per holder	10 kg
Holder Mono 12 light (wood)	per holder	8 kg
Front arm Ø 12 mm		10 kg
Bracket for hanging rail Ø 15 mm	per bracket	10 kg
Bracket Ø 12 mm for wooden or glass shelf	per bracket	10 kg